

DATSUN 280-ZX

THE FIRST NEW Z CAR IN A DECADE



The new Z.

Are there three other words in the automotive world that can inspire such excitement, inflame such anticipation and the beginning of another. For the 280-ZX signals at once the end of one legend the fame of its legendary predecessor as surely as green follows red, as Le Mans follows Monaco.

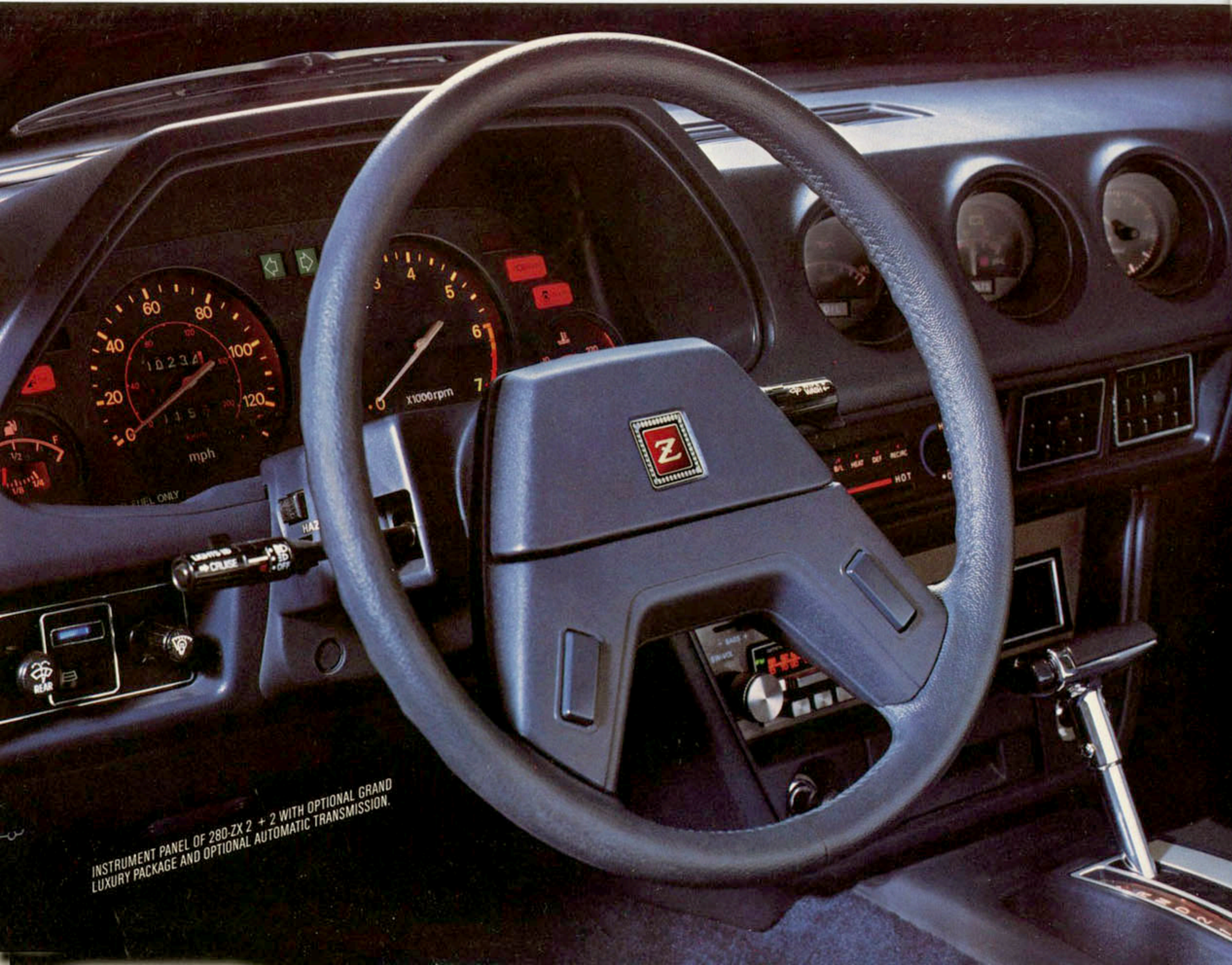
In one master stroke, our masterwork captures the mystique and creates the magic that have surrounded Z cars for a decade. And drives beyond!

Not by run of luck or marketing wizardry, but through compulsive engineering excellence and an unrelenting drive for perfection. In these pages, you will get a taste of the 280-ZX. But you will not fully savor it. For only the new Datsun 280-ZX—under power—can do justice to itself.

It is Datsun... driven to its best. And Datsun at its best is awesome!



280-ZX HATCHBACK COUPE
WITH OPTIONAL GRAND LUXURY PACKAGE
AND OPTIONAL BLACK WITH GOLD ACCENT PACKAGE



INSTRUMENT PANEL OF 280-ZX 2+2 WITH OPTIONAL GRAND LUXURY PACKAGE AND OPTIONAL AUTOMATIC TRANSMISSION.

TAKE COMMAND IN THE SEAT OF POWER.

At the curb, the new Datsun 280-ZX sits and waits like a cunning beast of prey. Until you ignite its fuel-injected fire and engage its 5-speed synchromeshed gears—thus arming a machine that performs on the outer limits: coiling like a snake through twisting scenic route, tracking like a dart down shafts of expressway.

Downshift through a curve, barely toeing the big, power-assisted 4-wheel disc brakes. Feel the fully independent suspension glue machine to road.

Inside, lights light up your life. Includes overhead directional beam for pilot and navigator; detachable extension beam complete with extension cord for engine compartment.

Stalk-mounted controls: lights, beams, flasher, turn signals, lane changer and 3-speed intermittent windshield wipers.

In the dual-calibrated fuel gauge, a second scale operates at 1/4 tank or less—a warning glows when you're near 1/8 or less.

The antenna retracts automatically, when the ignition is turned off. Behind each seat in the 2-seater, concealed stash-away compartments. Even a secret valuables box in both ZX models. (We won't say where.)

Grand Luxury Package

The interior of the 280-ZX with Grand Luxury Package invades your senses.

Puts control in your fingertips, power in your toes and life in your soul. Touch the computer sensor system test button and a read-out screen flashes a check of vital signs. Scan the instrument cluster—fuel, temperature, oil and voltage—glowing like a star ship's.

Activate the stereo—four speakers, controlled by the surround sound baton. Balance the sound around you until it envelops you. Ease into the contoured, veloured, race-style bucket seats. Align your spine with adjustable lumbar support.*

At highway speed, activate the cruise control (yes, even in a 5-speed!) toll gate feature. One touch lowers your window. As you depart, another touch raises it.

More Grand Luxury Package features include aluminum alloy wheels, power steering on the 2-seater, rear window wiper/washer, raised-white-letter tires (available later), remote control electric passenger mirror and door map-pockets.

This is the Z to escape in.
*Standard on all models, driver's side only.



INTERIOR OF 280-ZX 2+2 WITH OPTIONAL GRAND LUXURY PACKAGE AND OPTIONAL AUTOMATIC TRANSMISSION.



In driving the Datsun 280-ZX 2+2, you may encounter the experience
so many Z lovers have had, but so few can describe.
It is almost mystical.
You and the car respond in such perfect harmony, in such precise
balance that you feel it is part of you... and you are part of it!
The rear seat accommodates children or occasional adults. Split,
fold-down rear seat backs give maximum flexibility for cargo and passenger.

DATSUN 280-ZX 2 + 2 WITH OPTIONAL GRAND LUXURY
PACKAGE AND OPTIONAL TWO-TONE PAINT

OUR TWO SEATER'S STANDARDS.

Who but Datsun would call these standards, standard? Why they're enough to make an option list blush. You'll find them on the Datsun 280-ZX 2-seater Hatchback Coupe.

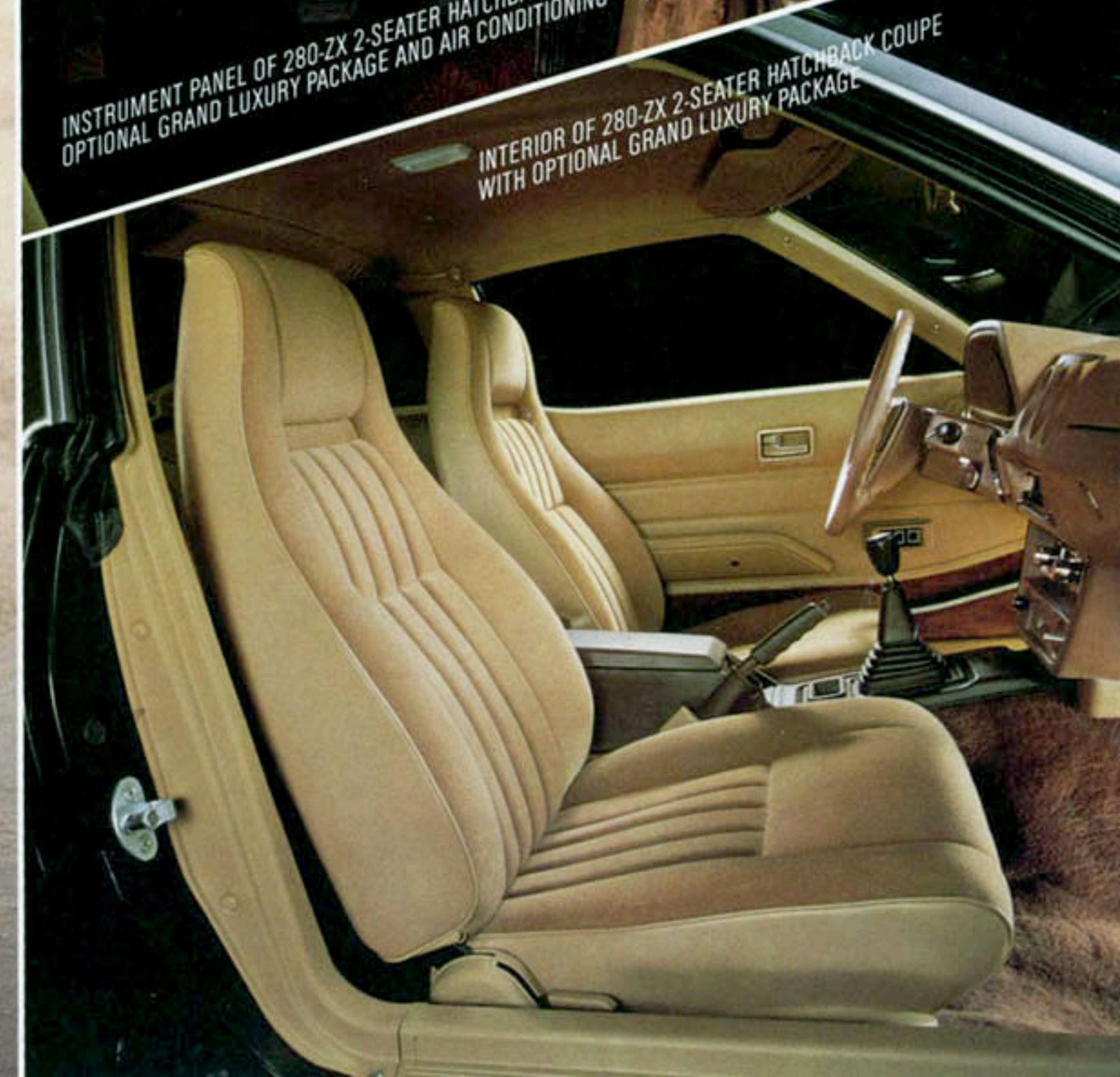
- Electronically fuel-injected 2.8-liter overhead cam six
- 5-speed overdrive manual transmission
- All-around power assist disc brakes, ventilated in front
- Fully independent suspension
- Rack-and-pinion steering
- Reclining breathable vinyl bucket seats with driver's cushion height adjustment and lumbar support
- 3-speaker AM/FM stereo with automatic retracting power antenna
- 195/70 HR 14 steel-belted radial tires
- Full instrumentation, including tachometer
- Dual fuel gauge
- Tinted glass
- Electric rear window defroster
- Full cut-pile carpeting
- Full simulated alloy wheel covers
- Three hidden storage compartments
- Flow-through ventilation
- Stalk-mounted controls

And that's just the beginning. Turn the page for the complete rundown.

DATSUN 280-ZX 2-SEATER HATCHBACK COUPE



INSTRUMENT PANEL OF 280-ZX 2-SEATER HATCHBACK COUPE WITH OPTIONAL GRAND LUXURY PACKAGE AND AIR CONDITIONING



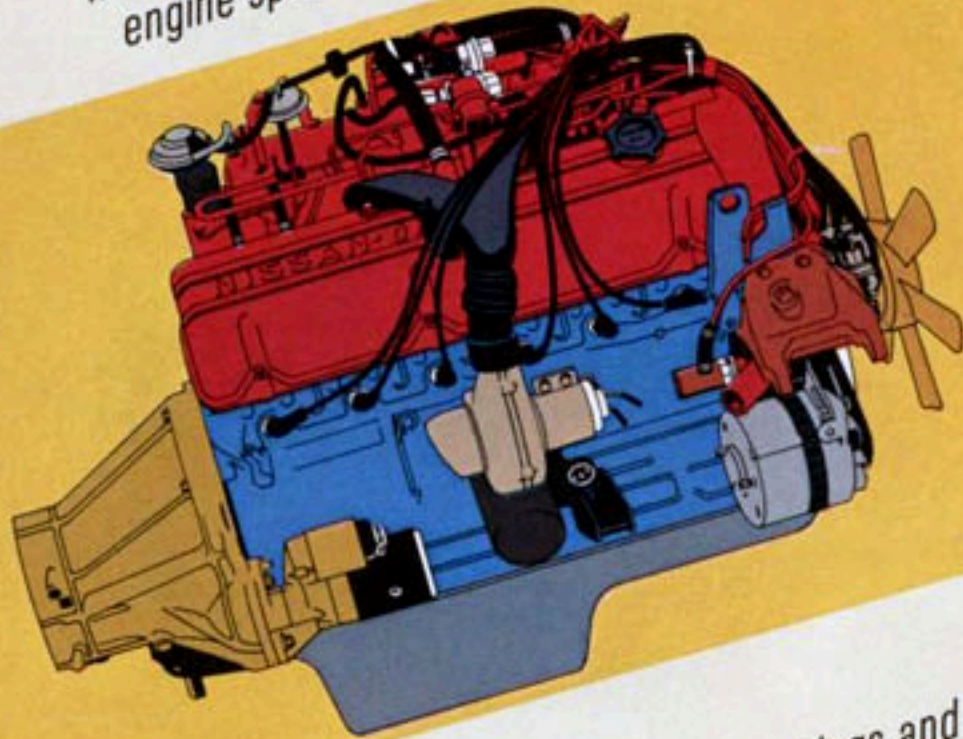
INTERIOR OF 280-ZX 2-SEATER HATCHBACK COUPE WITH OPTIONAL GRAND LUXURY PACKAGE

DATSUN 280-ZX ENGINE

TYPE: Six-in-line, single overhead cam, cast-iron block, aluminum head, seven main bearings.

Bore x stroke: 3.39 in. x 3.11 in.
 Displacement: 2,753 c.c. (168 cu. in.)
 Compression ratio: 8.3
 Fuel system: Electronically fuel-injected
 Power (SAE net): 135 HP/5200 RPM
 Federal: 132 HP/5200 RPM
 Calif.: 144 FT-LBS/4000 RPM

Torque (SAE net): 6,400 RPM (redline)
 Max. recommended engine speed:



SUSPENSION

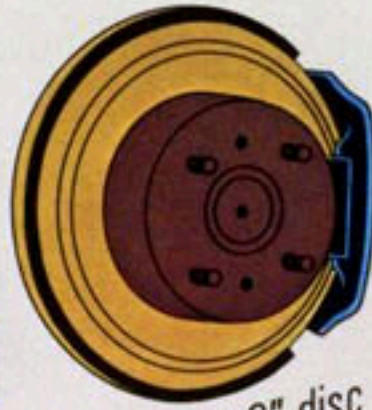
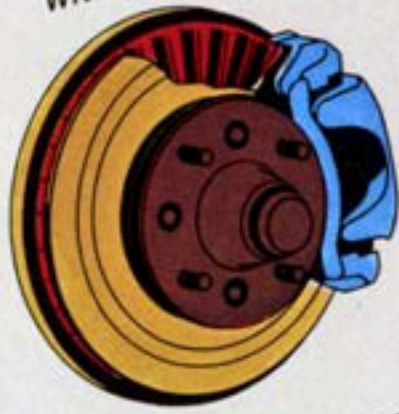
Front: Independent strut-type with coil springs and stabilizer bar
 Rear: Independent semi-trailing arms with coil springs and stabilizer bar

STEERING

Type: Rack-and-pinion in 2-seater
 Power steering in 2+2 and 2-seater w/Grand Luxury Package
 Turns lock-to-lock: 3.5 (2.7 with power steering)
 Turning diameter: 2-seater 32.2'
 2+2 34.8'

BRAKES

Front: 9.9" ventilated disc with power-assist



Rear: 10.6" disc with power-assist

WHEELS AND TIRES

Wheel Size: 5 1/2 JJ-14 (6JJ-14 with Grand Luxury models)
 Wheel type: Steel (Aluminum alloy with Grand Luxury models)
 Tire size: 195/70HR-14
 Tire type: Steel-belted radials

INSTRUMENTATION DISPLAY

Style: Aircraft, back-lit
 • Oil pressure gauge
 • Speedometer MPH/KMPH
 • Trip odometer

Warning Lights:

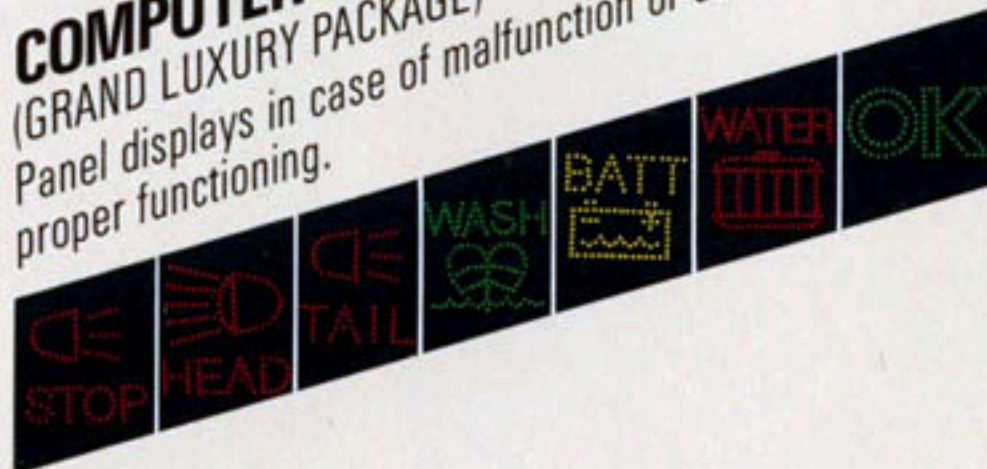
- Low fuel
- Brakes
- Hazard
- High beams
- Light and key

- Tachometer
- Temperature
- Voltmeter
- Dual fuel gauge

- Oil pressure
- Rear window defroster
- Charging
- Seat belts
- Door ajar

COMPUTER SENSOR SYSTEM (GRAND LUXURY PACKAGE)

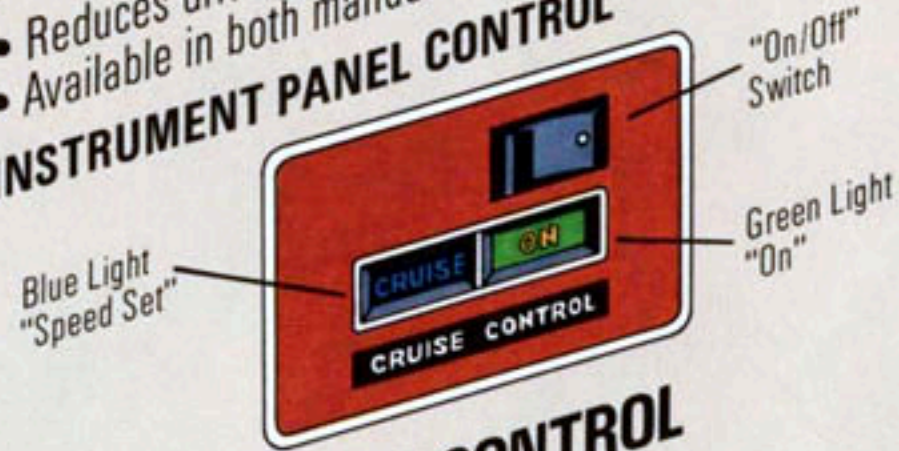
Panel displays in case of malfunction or as check list of proper functioning.



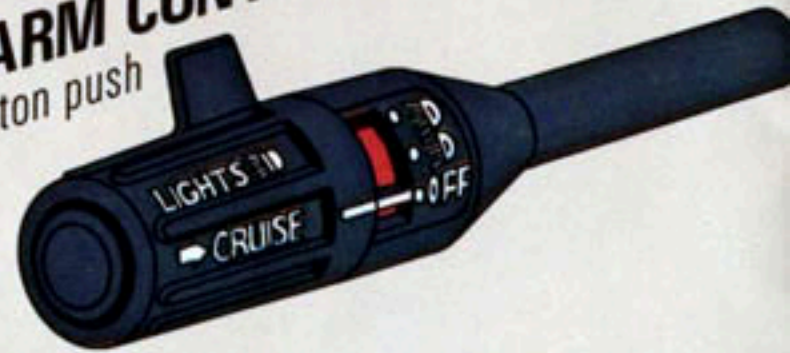
CRUISE CONTROL (GRAND LUXURY PACKAGE)

- Reduces driver's fatigue during highway driving
- Available in both manual and automatic transmission

INSTRUMENT PANEL CONTROL



INDICATOR ARM CONTROL "Speed Set" by button push at end of indicator arm



AIR CONDITIONING

- Standard on all 2+2 models, optional on 2-seater
- Fresh air exchange is especially good when smoking.
- Features variable fan speeds.

SPLIT, FOLD-DOWN REAR SEAT BACKS (2+2 ONLY)

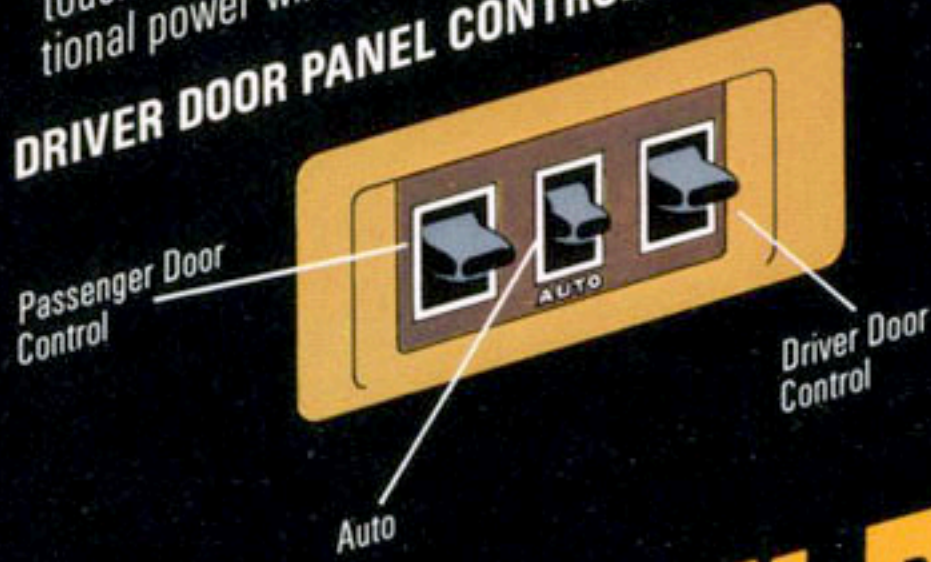
- Allows rear passenger to sit while long cargo is accommodated on other side. Or both seat backs fold down for maximum cargo space.



POWER WINDOWS (GRAND LUXURY PACKAGE)

- Innovative automatic feature for driver's window; allows window to be fully raised or lowered with one touch. Both driver and passenger also have conventional power window switches.

DRIVER DOOR PANEL CONTROLS



AUTOMATIC RETRACTING POWER ANTENNA

Lowers automatically when ignition is turned off and antenna is up.

BLACK WITH GOLD ACCENT PACKAGE (OPTIONAL)

- Gold insert aluminum alloy wheels
- Gold-colored emblems
- Black Pearl Metallic Paint
- Unique gold graphics

AWESOME! DATSUN 280-ZX.



280-ZX HATCHBACK COUPE WITH OPTIONAL GRAND LUXURY PACKAGE AND OPTIONAL BLACK WITH GOLD ACCENT PACKAGE

GRAND LUXURY PACKAGE (OPTIONAL)

- 6JJ-14 aluminum alloy wheels
- 5AM/5FM push-button stereo radio with surround sound control and 4 speakers
- Power windows
- Power steering (2-seater, already standard on 2+2)
- Cruise control
- Rear window wiper/washer
- Cloth upholstery
- Computer sensor system
- Remote-control electric passenger door mirror
- Door map pockets

280-ZX STANDARD EQUIPMENT

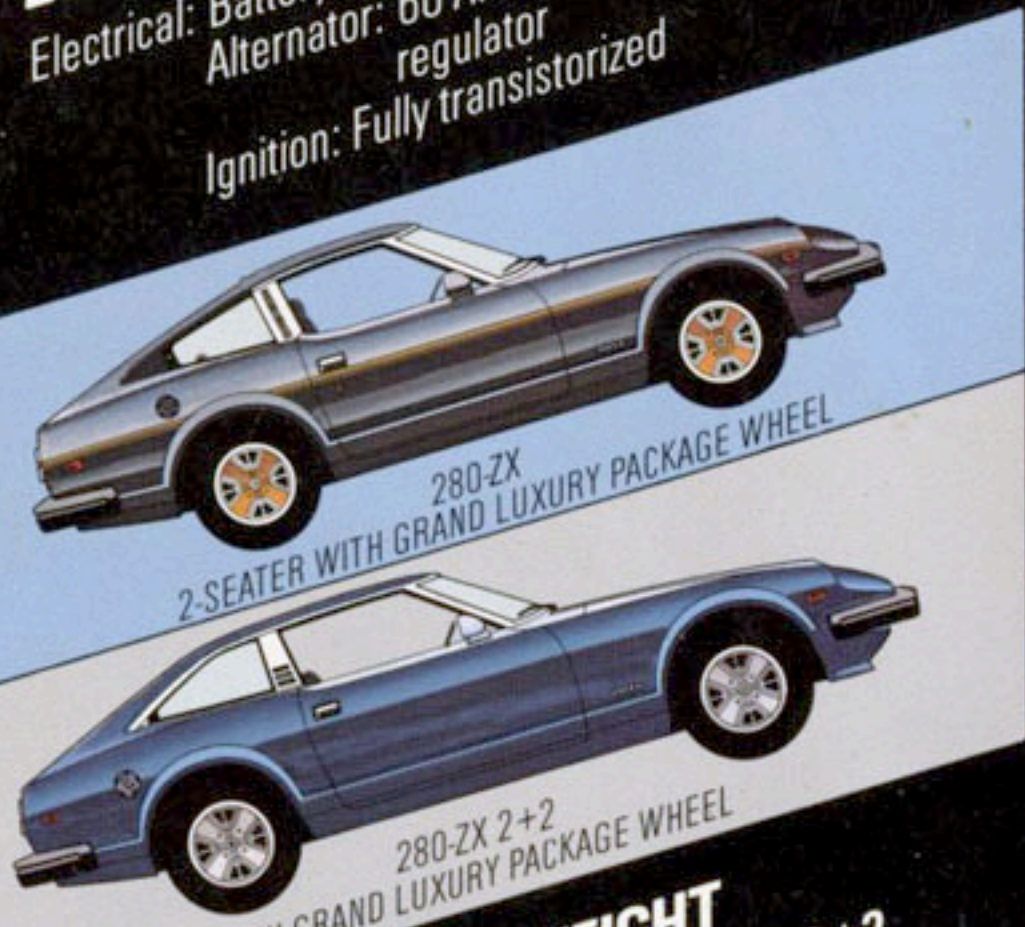
- 5-speed overdrive manual transmission
- Complete aircraft-style back-lit instrumentation, including tachometer and warning light group.
- Dual fuel gauge
- AM/FM stereo radio (3 speakers) with automatic retracting power antenna
- Air conditioning (2+2)
- 4-wheel power-assist disc brakes, ventilated in front
- Rack-and-pinion steering (standard 2-seater)
- Power steering (2+2)
- Quartz sweep-hand clock
- Steering column stalk-mounted controls
- Full cut-pile carpeting
- Reclining front bucket seats
- Adjustable height and lumbar support on driver's seat
- Split, fold-down rear seat backs (2+2)
- Unibody construction
- Tinted glass
- Electric rear window defroster
- Cigar lighter
- Resetable trip odometer
- Remote electric driver's door mirror
- Remote hatch opener
- Flow-through ventilation
- Bumper guards
- Locking fuel filler
- Locking glove box
- Hidden storage compartments (three on 2-seater, one on 2+2)
- Full simulated alloy wheel covers
- Full console box with armrest cover
- Inside hood release

OPTIONAL EQUIPMENT

- Automatic transmission
- Fully integrated air conditioning (2 seater)
- Grand Luxury Package
- Black with Gold Accent Package (only available with Grand Luxury Package)
- Two-tone paint (only available with Grand Luxury Package)

280-ZX SPECIFICATIONS

Electrical: Battery: 60 AMP/HR low maintenance
 Alternator: 60 AMP with solid-state voltage regulator
 Ignition: Fully transistorized



280-ZX
2-SEATER WITH GRAND LUXURY PACKAGE WHEEL

280-ZX 2+2
WITH GRAND LUXURY PACKAGE WHEEL

DIMENSIONS AND WEIGHT

	2-Seater	2+2
Length	174.0"	181.9"
Width	66.5"	66.5"
Height	51.0"	51.4"
Wheelbase	91.3"	99.2"
Turning Diameter	32.2'	34.8'
Curb Weight*	2,696 lbs.	2,937 lbs.
Fuel Tank Capacity	21.1 gals.	21.1 gals.

*Vehicles with optional equipment packages or California emissions equipment will vary slightly.

280-ZX STANDARD SAFETY FEATURES

- Backup lights
- Collapsible steering column
- Flame-retardant interior materials
- 4-way hazard warning lights
- Impact-absorbing bumpers
- Padded sun visors
- Steering-column lock
- Passenger restraint system with warning light and buzzer

GAS MILEAGE

1979 E.P.A. ESTIMATED 280-ZX MPG
49 States

Model	Calif.
2-seater	17
5-speed	16
Automatic	17
2+2	16
5-speed	18
Automatic	16

Remember: Use this estimate for comparisons. The actual mileage you get may be poorer, depending on the type of driving you do, your driving habits, your car's condition, and optional equipment.

All illustrations and specifications in this catalog are based on the latest product information available at time of publication. Nissan Motor Corporation in U.S.A. reserves the right to make changes at any time, without notice, in prices, colors, materials, equipment, specifications and models, and to discontinue models.

RAVES FROM AUTOMOTIVE PRESS:

"Probably the most innovative thing ever to come from Nissan steel!"
Motor Trend

"The ZX does offer impressive value for the dollar and because of that we expect it to be a rousing success."
Road & Track

"The new ZX car is strongly biased toward the luxury side of life... In profile (it) brings to mind the Ferrari Daytona..."
Car & Driver

NOBODY DEMANDS MORE
DATSUN
 WE ARE DRIVEN

